

# Tux Pattern Version 0.5, 25. Oct. 2004

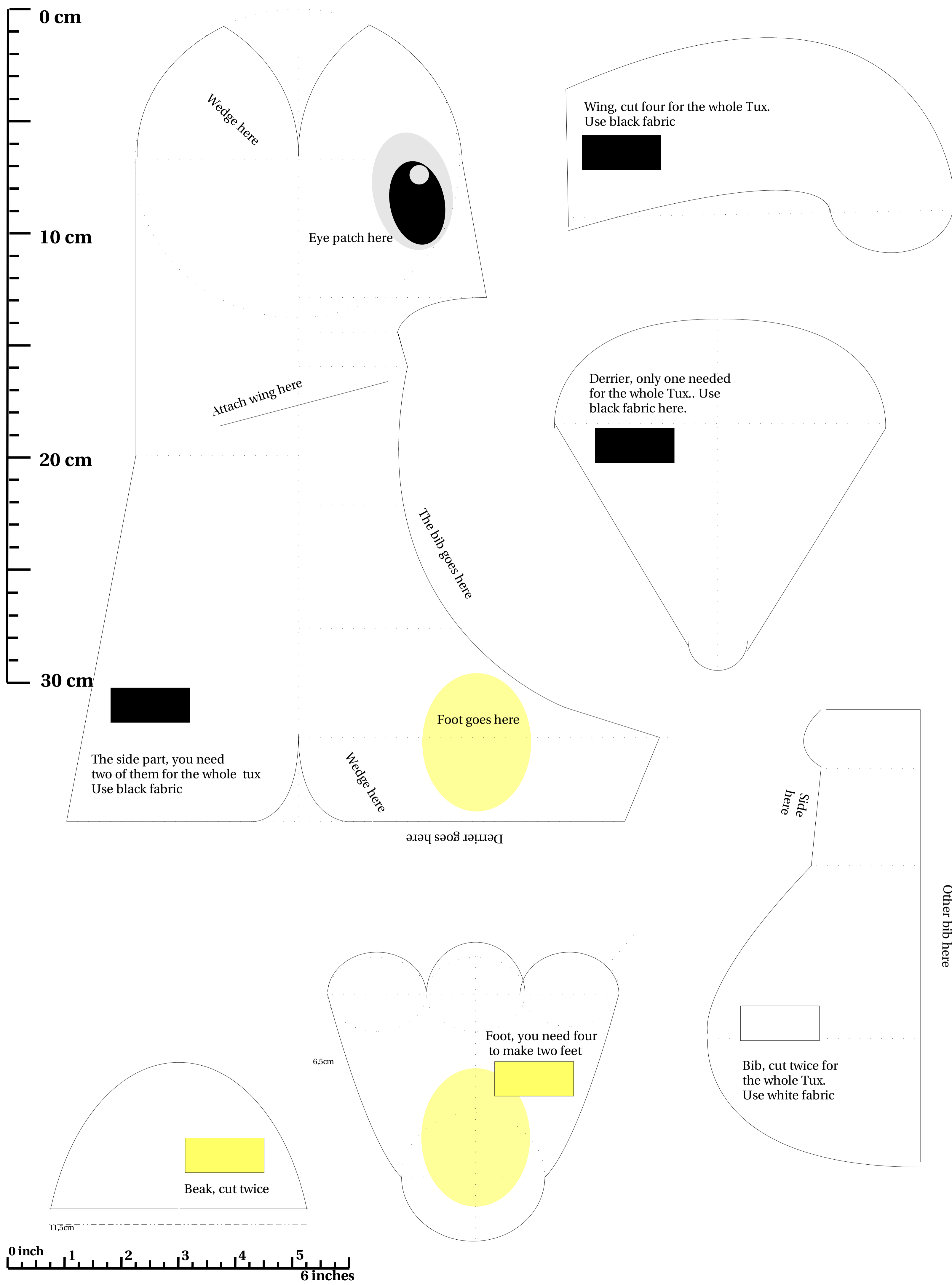
<http://www.free-penguin.org>  
<mailto:joerg.feuerhake@free-penguin.org>

The whole Tux is vertically symmetric. So here you learn how to make one half. The other half is just the mirror of this one here. There are loads of tricks to sew this one properly that's why some pictures are attached here.

- Changelog:
- enhancements in curvature of the head
  - further enhancements of head and behinds
  - put some cm- and inch-rulers to it, to give sewers an idea of the original size
  - improved beak form
  - color marks are put within the patches

To implement the eyes it would be best to use painted or stitched patches and just attach them.

TODOS: Further development of the feet, they are now in development status, they have to be improved



License: This patterns are released under GPL